

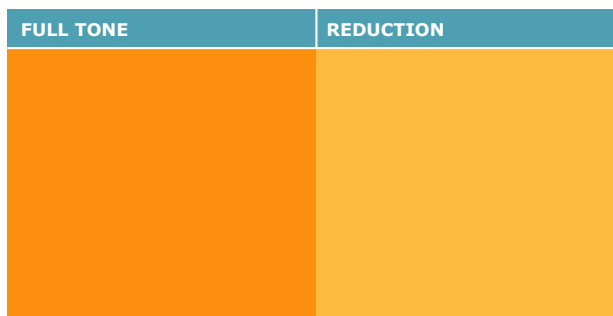
PRODUCT DESCRIPTION		
Color Index	Pigment Yellow 83	
C.I. No.	21108	
Chemical Type	Diarylide Yellow	
CAS No.	5567-15-7	
Hue Angle	72.1	
1/3 ISD Reduction Ratio	1:2.4	DIN EN ISO 53235
1/25 ISD Reduction Ratio	1:154.0	DIN EN ISO 53235

PHYSICAL DATA		
Appearance	Yellow Powder	
Density [g/cm ³]	1.6	DIN EN ISO 787-10
Bulk Volume [ltr/kg]	3.2	DIN 53194
Specific Surface [m ² /g]	24	DIN EN ISO 66132
Oil Absorption [ml/100g]	58	DIN EN ISO 787-5

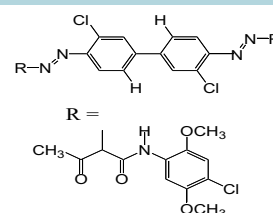
FASTNESS PROPERTIES		
Acid	5	DIN EN ISO 787-4
Alkali	5	DIN EN ISO 787-4
Overpainting	5	1)
Water	5	DIN EN ISO 2836
Butanol	4-5	DIN EN ISO 2836
Butyl Acetate	4	DIN EN ISO 2836
Xylene	4	DIN EN ISO 2836
MEK	4	DIN EN ISO 2836
White Spirits	4	DIN EN ISO 2836
Heat Resistance [°C]	200	2)
Light Fastness	DIN EN ISO 105-B01	
Full Shade	7-8	
1:1 TiO ₂	7-8	
1/3 ISD	7-8	
Weather Fastness	DIN EN ISO 20105-A02	
Full Shade	[12 months] 4	[24 months] 4
1:1 TiO ₂	[12 months] 4	[24 months] 3-4
1/3 ISD	[12 months] 4	[24 months] 3-4

1) Pigments were tested in 2C Acrylic system with 30 minutes baking time at 80°C.

2) Pigments were tested in 2C Acrylic system.
Temperature <200°C DE ≤ 1



STRUCTURAL FORMULA



APPLICATION PROFILE

Waterborne Paints	recommended
Air Drying Alkyds	recommended
Stoving Enamels	recommended
Acid Curing Systems	recommended
Amine Curing Epoxies	recommended
Isocyanate Cured Systems	recommended
Powder Coatings	recommended

REGULATIONS

Germany BfR recom. IX	compliant
APME AP 89/1	compliant
USA (FDA) 21 CFR § 178.3297	-
Toys Europe EN 71-3	compliant
Toys USA ASTM F 94/62	compliant
CONEG, EC 94/62	compliant
ROHS, 2002/95/E, 2005/618/EC	compliant
End of Life Vehicles, 2000/53/EC, 2002/525/EC	compliant

STANDARD PACKAGING

- 20kg Cardboard Boxes
- Different types of packaging are available on request